

## Prussia Points® Convention Seminar

### *Stories Behind the Portraits*

Synopsis of the July 23, 2010, presentation by Allen Marcus

A favorite aspect of collecting R.S. Prussia is the alluring portraits and figural designs, as well as the related history and legends that intrigue both the collector and casual admirer. The 2010 R.S. Prussia convention seminar was a composite of showing of a wide range of examples of R.S. Prussia and E.S. portrait pieces; presenting the relevant European history; art history, Greek and Roman mythology, and even some purported scandals that are associated with some of the familiar portraits. This synopsis is a partial excerpt from the seminar program, which included an abundance of information on numerous portraits, artists and paintings.

The seminar was organized as follows:

- I. Use of Portraits and Figurals
- II. Biographies and Legends
- III. Values and Trends
- IV. Questions and Comments

### I. Use of Portraits and Figurals

Both the Reinhold Schlegelmilch (RSP) and Erdman Schlegelmilch (ES) factories were small second-tier china producers and the majority of their late nineteenth and early twenty century products were transfer wares, rather than hand-painted items. As such, the Schlegelmilch factories most likely acquired decals in printed lithographic sheets from suppliers. Decals of portraits and figurals on china were used to enhance and upgrade product lines by adapting the design and décor styles of the larger china producers, such as Meissen and Royal Vienna, Austria. The use of formal, romantic and allegorical portraits and figurals was a popular decorating approach during the art nouveau period and the Reinhold and Erdman Schlegelmilch factories followed suit.

Some of the portrait and figural decals were based on well-known and famous European artworks, and others were probably drawn by the decal company artists. Thus, it is not unusual to see RSP and ES designs on other factory wares. The portrait and figural types that are seen include:



a. “Real people” – e.g., Lebrun, Recamier, Potocka (on RSP), Native Americans and Napoleon (on ES), and Queen Louise of Prussia, who is shown on both RSP and ES.

b. Mythological, allegorical and commercial artworks – these include figures from Greek mythology, neo-classic Roman styles, and early 20th century fashion art, such as the Gibson Girl motifs.

c. Original decal artwork – i.e., portraits that were probably created by the decal producers themselves but are not known or seen as famous art works.

**The International Association  
of R.S. Prussia Collectors, Inc.**

visit us at  
[www.rsprussia.com](http://www.rsprussia.com)

**President**

Allen Di Marco, Pennsylvania  
570-547-2113  
ajdgl@aol.com

**Vice President**

Nadine Sidmore, Alabama  
256-891-7571  
sidmore\_antiques@yahoo.com

**Secretary**

Mary Lou Bougher, Kentucky  
502-247-7155  
mlkbougher@hotmail.com

**Treasurer**

Ken Bougher, Kentucky  
502-247-7155  
mlkbougher@msn.com

**Past President**

Terry Coy, Kentucky  
502-244-5391  
user258442@aol.com

**Directors**

Judy Bazaar, Illinois  
847-331-6113  
judybazaar@yahoo.com

Larry Bazaar, Illinois  
847-331-6113  
labazaar@comcast.net

Harold Dodds, Jr., New Jersey  
908-713-1655  
hdodds6697@aol.com

Paul Fischer, Indiana  
317-590-5721  
paul\_fischer\_antiques@yahoo.com

Allen Marcus, Virginia  
703-912-3044  
AAMarc99@aol.com

Beth Vander Meer, Michigan  
269-792-9284  
bvandermeer@fnwusers.com

**Historian**

Mary Lou Bougher, Kentucky  
502-247-7155  
mlkbougher@hotmail.com

**Newsletter Editor**

Linda Titus, Iowa  
Phone 563-785-4438  
Fax 563-785-4673  
P.O. Box 983  
Durant, IA 52747-0983  
imagesinink@iowatelecom.net

## President's Message

*Allen Di Marco*

I hope that each of you had a wonderful holiday season leaving you with pleasant memories that will fill your hearts with joy for many years to come. I also hope that each of you were fortunate in finding a present (with "RS" on the bottom) or one in an antique store while you were shopping.

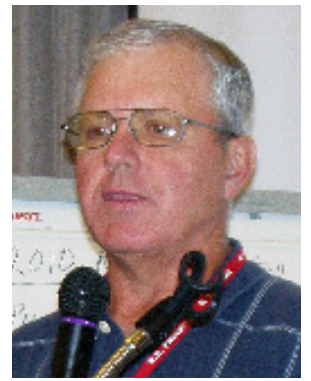
With the winter upon us, there hasn't been too much happening with the club since our last newsletter. I do want to remind you that dues are now payable and that you can make hotel reservations for the convention.

In recent years, many of you have chosen to arrive at convention on Wednesday. In looking at the room reservations for the last several years, more and more of you have been arriving on Tuesday. That is wonderful! We are glad to have you.

In an earlier message, I mentioned that we would be trying a few new events at convention this year. Terry Coy and I were able to negotiate (free of charge) a room for an all-day Wednesday sale that would be open to our club members and to the general public. I am told that other clubs have been successful with this type of event. If you would like to take advantage of this opportunity, please contact Danny and Paul (317-590-5721) for the details. Obviously there will be no charge to members. Some of the people who are interested in doing the one-day show are board members. Consequently, the show must be held on Wednesday so that these board members will be able to attend the scheduled board meeting. Paul has shared with me that there is some apprehension (for numerous reasons) on the part of many of you to commit to the one-day show. I truly hope that you will reconsider. Let's try to establish something new that will bring interest to our club and open sales to the general public.

I am currently working on a side trip opportunity for convention goers. This is an evening dining experience on the B & B Riverboat. The Captain's Dinner Cruise is scheduled for Wednesday evening and will run from 7:00 - 9:30 p.m. Members wishing to attend will be responsible for their own reservations and transportation. The details of this cruise can be found on page 2.

The Board has heard repeatedly from you that you want to see changes. I sincerely hope that you will take advantage of these two new opportunities. In our next newsletter I will publish additional sightseeing and shopping destinations. It isn't even spring, and I am already looking forward to seeing each of you in Cincinnati in July! ☆



---

## Newsletter Policy

This newsletter is the voice of the members of the International Association of R.S. Prussia, Inc. We welcome articles from members. We ask that articles be constructive and contribute positively to the welfare of the club and its members. The newsletter is printed four times a year. Publication mail dates are January 15, April 15, June 15, and October 15. Articles submitted for publication are due to the editor by the 15th of the month prior to publication and are subject to editing. (For example, items for the April issue would be due by March 15th) We look forward to hearing from you!

# From the Secretary and Treasurer

Mary Lou and Ken Bougher

Hello to all of our Prussia friends, whether you are still in winter's grip or in warmer climates. At this writing, we have only received 136 renewals for 2011. If you have not yet sent yours, please do so as soon as possible. The roster book will come out next issue and we want you to be included. All renewals are greatly appreciated.

We have received three nice donations to the club. Thank you to those generous members. These donations are greatly appreciated and will help out with our operating expenses.

It's time to start thinking of convention. It will be held July 18 - 24 in Mason, Ohio near Cincinnati. This is a little earlier than normal and it will be here before you know it.

Who do you know who loves Prussia that isn't a member? Invite them to join the club and come to convention. Let us know if you need application brochures. Where else can you talk about Prussia until midnight and not bore someone? Where else can you see hundreds of pieces of Prussia, some of them extremely rare and unusual? If you're like Ken and me, people look at you like you're nuts when you start talking Prussia. Our area is more into primitives from the cabin, whereas we want the dishes from the big house!

Renewals are \$50.00. Just make out your check to IARSPC, Inc. and mail to

**IARSPC, Inc.**

**P.O. Box 624**

**Mayfield, KY 42066**

Also consider a donation to help the club. They are greatly appreciated. ★

## With Sympathy

Dr. James Humphrey, Missouri

Lois Rinne, Kansas

Russell Cunningham, Nebraska

Marvin Heard, Minnesota

## Upcoming Auction

Theresa Newcomer

This is a note to let members know that Harlan Miller's R.S. Prussia items will be sold this spring at the Conestoga Auction House, 768 Graystone Road, Manheim Pennsylvania, 17545. If you have any questions, you may call the auction house directly at 717-898-7284 or email: [ca@conestogauction.com](mailto:ca@conestogauction.com). For more information about Harlan and his collection, feel free to call us, Ken and Theresa Newcomer at 717-653-5976. Harlan was a good friend and avid collector.

## Spring 2011 Heartland Meeting

April 1- 3, West Des Moines Marriott, Des Moines, Iowa. Rooms: King or Queen, \$92 plus tax, call: 515-267-1500, ask for Heartland RS Prussia. Make reservations by March 11.

## BB Riverboat Cruise Info

There will be a dinner cruise side trip available for convention goers on Wednesday evening, July 20 from 7:00 to 9:30 pm. Members interested in the sightseeing cruise or the dinner cruise on the BB Riverboat must make their own arrangements, reservations and transportation.

Meal cruises offer buffet service, reserved seating, and a cash bar for soft drinks, mixed drinks, beer and wine. If you need to be seated with another party, please indicate it in the comments field when making reservations online. Once onboard, there are no guarantees that BB will be able to move groups around to accommodate seating requests. Full payment is required in advance for all cruises. On most cruises, cancellations called in 48 hours prior to departure will receive a 90% refund. Cancellations within 48 hours of departure are non-refundable. Special cancellation policies apply to all special events and certain holiday cruises.

BB Riverboats does not guarantee a

specific boat for any cruise and reserves the right to move groups to other decks or boats if necessary. Cruises are subject to cancellation in the event of low booking. Schedule is subject to change. All meal cruises are subject to 15% food service fee. All cruises subject to 6% sales tax.

### Cost Summary and breakdown of all charges for dinner cruise trip with all the taxes and gratuities added:

Party of: 2 Seniors			
Event: Captain's Dinner Cruise			
Date: Wednesday, July 20, 2011			
Vessel: Belle of Cincinnati			
Boards: 6:00 pm at Newport Landing			
Departs: 7:00 pm			
Disembarks: 9:30 pm			
Description	Qty	Cost	Total
Seniors	2	33.95	67.90
			Total 67.90
			Service Charge 10.18
			Port Charges 1.02
			Tax 4.74
			Total 83.84

### Cost Summary and breakdown of all charges for sightseeing only (no dinner) trip:

Description	Qty	Cost	Total
Seniors	2	18.50	37.00
			Total 37.00
			Port Charges 0.56
			Tax 2.26
			Total 39.82

*\*Note the non-refund policy\**

For more information or to make reservations online visit the BB Riverboat site at [www.bbriverboats.com](http://www.bbriverboats.com)



## II. Biographies and Legends

Perhaps the most interesting stories behind the portraits are the biographies of the “real people” whose beautiful portraiture enhanced the porcelain when it was produced and intrigue collectors to this day.



### a. Marie Louise Elisabeth Vigée Lebrun (1755 – 1842)

Lebrun’s two portraits that appear on RSP, one of her wearing a bonnet and one with a rib-

bon in her hair, show her as an adolescent or young woman. These portraits were two of many self-portraits that she painted throughout her life. She was very accomplished and was taught painting by her father at a time when women were excluded from all professions and arts. She became a favorite of Queen Marie Antoinette of France, and one of her paintings, “Peace Bringing Back Plenty”, an allegorical picture, was admitted to the French Academy of Painting. This painting now hangs in the Louvre. The picture that appears on RSP has been modified by the decal producer by covering the bosom of the figure representing “Plenty”. Because of her affiliation with the French royal family, Lebrun’s life was probably in danger during the French Revolution and she fled France and traveled throughout Europe. She lived in Rome, Naples, Vienna, St. Petersburg and Moscow. She painted prolifically, especially in Russia where many of her works are now in the Hermitage.



She returned to France in 1810, but grew unhappy with the political climate and the Napoleonic regime, so she then moved to England, where she continued to paint. She returned to France again in her later years, continuing to paint throughout her life. She also wrote her autobiography, which refers to her art, the turbulent French Revolution, counter-revolutions and the life of European aristocracy.

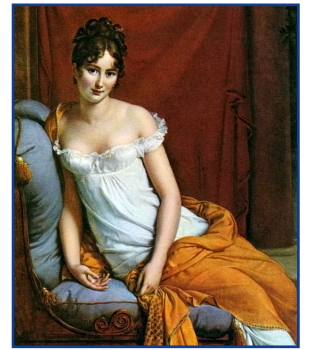
The Lebrun pieces are seen on a wide variety of beautifully designed RSP, as well as other manufacturers’ wares, including Japanese Nippon and Warwick china (from West Virginia), and on antique post cards and portrait pins.

Lebrun’s self-portrait that is seen on RSP was depicted on a French commemorative stamp in 1992, marking the 150th anniversary of her death.



### b. Madame Recamier (1777 – 1849)

Recamier, whose full name was Jeanne Francoise Julie Adelaide Bernard, was essentially a hostess and raconteur (a conversationalist), who had a salon in Paris and in her later years in Montmartre, France. She married a banker when she was fifteen, but was divorced following his financial ruin. She then became engaged to Prince August of Prussia; however, the marriage never took place. She hosted famous literary and political figures and she was, for a time, in the forefront of Parisian society. The type of sofa on which she enjoyed lounging was named for her.



The portrait of Recamier that is seen on RSP and other porcelain was painted by Baron Gerard. A second portrait of Recamier was painted by the famous artist Jacques Louis David and shows with a somewhat different appearance. Recamier pieces on R. S. Prussia are seen on red-marked wreath-and-star, unmarked and Royal Vienna pieces.



**c. Anna Potocka (1758 – 1814[?])**  
There are varying accounts of Anna Potocka’s life and the dates of her birth and death. It may very well be that there were two women of Polish aristocracy who lived during the same period. From the source information in various articles and information published R. S. Prussia guide books, we know that Anna Potocka is famous for her charitable works, several marriages and her very colorful life. She was the daughter of a Polish nobleman. Born Anna Centner, her father arranged for her marriage to her first husband, who was much older and left her a young widow. She later married a Russian officer, and then met Count Stanislaus Potzki of Poland. She was able to obtain a divorce granted by the Roman Catholic Church, and was also known for having several romances.

The artist who painted portrait of Anna Potocka that appears on RSP is unknown. Interestingly, there is a portrait of Anna Potocka that was painted by Lebrun, but Potocka’s appearance in that painting differs greatly from

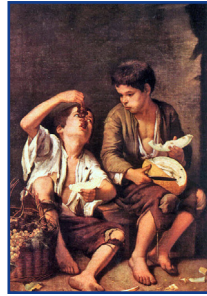


“Countess Potocka” by Lebrun (1791)

the familiar image that is seen on RSP and other china from the same period. Her portrait on RSP is seen on molds and marked items that are similar to those showing Lebrun and Recamier, as well as numerous non-RSP china.

**d. The “Melon Eaters” and “Dice Throwers”**

The depiction of beggar children is based on paintings by Spanish artist Bartolomé Esteban Murillo (1617 – 1672). Murillo painted in the baroque style and was greatly influenced by the Spanish painter Velazquez. He founded the Spanish Academy of Arts and was one of the first



Spanish painters to branch out from painting only religious subjects to painting genre. The decal art showing Murillo’s “Melon Eaters” and “Dice Throwers” were used by several second tier porcelain manufacturers, but the RSP factory applied these to its more elaborate and stylish pieces, such as the ribbon-and-jewel and point-and-clover molded pieces.

**e. The “Italian Women” Portrait Series**

These portraits were probably advertised at the time of their production as the “Italian Women”, and are identified as Countess Litta, Flossie and Tillie. Of the three, only Countess Litta is known. She was painted by Lebrun and her portrait (which does not resemble the portrait seen on RSP and Royal Vienna pieces) hangs in the Onatsky Art Museum, in Sumy, Ukraine. Little is known about Countess Litta, although some articles purport that she had a child by the King of Italy.



**f. The Four Seasons**

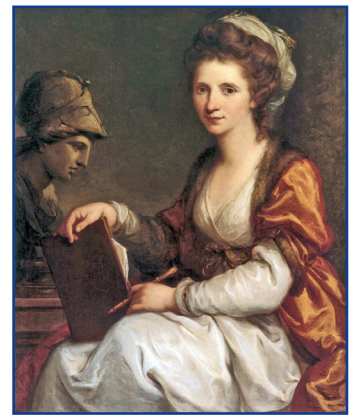
These allegorical figures representing the seasons and with corresponding backgrounds are favored among RSP collectors, and appear to have been produced specifically for china décor production. Used almost exclusively on RSP, the figures’ coiffures appear to be based on the Gibson girl fashion that was created in the early 1900s.



**g. Allegorical Figures by Angelica Kauffman**

A wide representation of neo-classic Greek and Roman figures and scenes

found on ES porcelain are attributed to Swiss-born Marie Anna Angelica Kauffman (1741 – 1807). Like Madam Lebrun, Kauffman gained notoriety in her lifetime, which was highly unusual for a female painter of her period. She traveled throughout Europe and became friends with the famous English painter Sir Joshua Reynolds.



Interest in her works waned following her death, but was revived by the china producers who felt that her pictures were akin to the designs of the more expensive high end china. Kauffmann’s works are found in Paris, London, Washington and Rome.

**h. “Monarch of the Glen” by Sir Edward Landseer**



This famous non-human portrait of a stag elk is attributed to the nineteenth century English artist Sir Edward Landseer (1802 – 1875). Landseer gained notoriety for his painting of the royal family titled “In Modern Times” and became a favorite of Queen Victoria. He was commissioned to sculpt the four large bronze lions that are at the base of the statue of Lord Horatio Nelson in Trafalgar Square, London. In all likelihood, the RSP stag figure is also a Landseer work, as it is in the same style as his “Monarch of the Glen”. Unfortunately, Landseer’s talent suffered as he became dependent on alcohol and drugs.

**i. The Gibson Girls**



The Gibson girl images were created by American illustrator Charles Dana Gibson and became very popular during the 1890s through 1920. The style for the new 20th century woman showed a degree of independence and individuality, transitioning from the staid Victorian image to the flappers of the roaring 20s. Gibson-style Girl portraits were used on RSP and other period china, and were probably the model for the design of the Four Seasons.

**j. Admiral Robert Peary**

The Peary images on RSP indicate that this motif was to appeal and be marketed to the American public. The reaching of the North Pole by Peary was a contemporary event for the RSP factory, so it can be considered that the Admiral Peary Arctic scenes pieces and the scene labeled “Midst Snow and Ice” are commemorative pieces. Peary, an American explorer, lived from 1856 to



*Continued on page 12 ...*

**Russell Cunningham & Dorla Gugel Auction, Select Results**  
 Saturday, January 22, 2011 • Woody Auction



10 1/2" Unmarked Prussia Mold 964  
 Covered Pedestal Urn Green and  
 Lavender Background with Dice  
 Throwers Scenic Decor - Red High-  
 lights - Opal Jewels - Gold Trim  
**\$1000**



Rare 7" RSP Mold 910 Vase  
 Green Tones With Lion Scenic  
 Decor - Nice Condition  
**\$900**



Rare 14" RSP Mold 556 Tankard  
 Fall Coloring, Satin with Fall Season  
 Portrait Decor, Outstanding Condition  
**\$1800**



11" Unmarked Prussia Mold 962  
 Pedestal Two Handed Covered  
 Urn White and Green Tones  
 With Bird of Paradise Scenic  
 Decor - Gold Stencil Highlights  
**\$450**



7" RSP Ribbon And Jewel Mold  
 Footed Ferner Cream and Green  
 with Rose Decor - Opal Jewels  
**\$90**



11" RSP Mold 155 Bowl  
 Three Scene Turkey, Duck  
 and Bluebird Decor  
**\$600**



10 1/2" RSP Medallion Mold Chocolate Pot with (6) Matching Cups & Saucers Waterlily  
 and Bluebird Scenic Decor - Lustre Finish - Great Set - One Cup With Base Hairline Crack  
**\$1650.00**



11" RSP Carnation Mold Bowl  
Summer Season Portrait Decor - Satin  
Finish - Gold Highlights

**\$1600**



10 1/2" RSP Iris Mold Bowl  
Pink and Cream Tones with Pink Poppy  
Decor - Unique Gold, Maroon and Green Iris  
Highlights - Extra Nice

**\$375**



8 1/2" Rsp Iris Mold Bowl  
Cobalt Blue With Poppy Decor  
- Gold Highlights - Nice

**\$550**



13 1/4" RSP Carnation Mold  
Tankard Yellow and Green  
with Large Pink Poppy Decor  
- Tri Color Gold Highlights

**\$500**



6 1/2" Rsp Footed Biscuit  
Jar & 12 1/2" Rsp Celery  
Tray Green Tones With  
Oak Leaf Decor

**\$175**



12 1/2" Unmarked R.S. Steeple Mold 3 Bun  
Tray Deep Cobalt Blue With Daffodil Decor  
- Gold Highlights

**\$525**



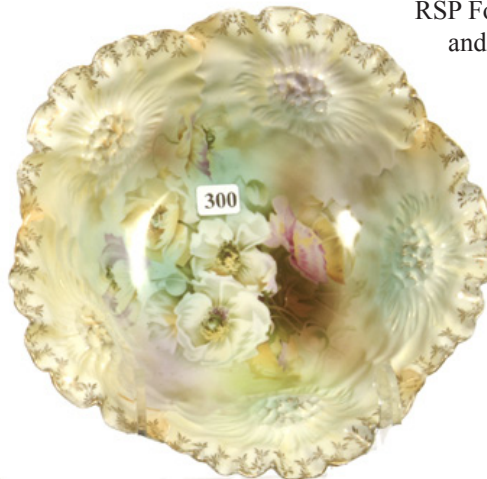
RSP Footed Creamer and Sugar White  
and Lavender with Floral Decor

**\$100**



9 1/2" RSP Sunflower Mold Berry Bowl & (4) Matching Dishes  
Yellow, Lavender and Green Tones with Floral Poppy Decor

**\$200**



RSP Iris Mold Mug  
Green Tones with Spring Season  
Portrait Decor - Satin Finish

**\$275**

International Association of  
RS Prussia Collectors Convention

# Cincinnati 2011

July 18 - 24  
Mason, Ohio

Cincinnati Marriott Northeast

**\$105 a night**  
plus tax



Call Central Reservations at  
(877) 204-8216

Limited number of suites available  
at \$199 a night.

Call Lisa Birck direct 513-459-3004  
Rates guaranteed through June 4, 2011

- ♦ All Non-Smoking
- ♦ No Pets
- ♦ Hot Breakfast
- ♦ Ice Cream Social
- ♦ Banquet
- ♦ Hospitality Room
- ♦ Auction
- ♦ Room Tables \$10 + tax

**New for 2011**

**RS Prussia Show and Sale**

*This will be open to the public!*

Display tables will be furnished at no charge.

It is imperative that members do not use their Marriot Rewards Program for the convention. The club will not get credit for the room nights if you use the rewards program. We have a minimum number of room nights we must book, or we could end up owing the hotel large amount of a money at the end of the convention.



# The Quest for Minis

Beth Vander Meer



It all started when browsing the beautiful examples of R.S. Prussia in one of my collector books. My eyes gazed upon the prized “mini” or “doll” sized cup and saucer sets. OOOHHHH, I thought how wonderful it would be to be able to add one of these adorable sets to my R.S. Prussia collection. I didn’t think it would ever be possible after seeing them at conventions with price tags ranging from \$300 and up per set.



Then one early morning while shopping at the Allegan Antique Show in Allegan, Michigan I spied this item that looked like, could it be? As I approached the booth this little white cup with tiny flowers sat on the shelf all alone with no saucer to complete her. I could feel my heart racing ... is this WHAT I think it is? I glanced at the price tag that I thought read \$300. Then I looked closer. There was a decimal point I hadn’t seen - \$3.00! I inspected the dainty little jewel and there was no

damage to be had. I kept thinking to myself ... can this really be happening? Could I really be adding this little charm to my collection? I placed the cup on the table next to the booth’s owner and asked if she had any more (what the

heck!). She stated that this was the only one she had and that she just picked it up at a Grand Rapids, Michigan estate sale earlier that week. She probably only paid a

quarter for it, but that was just fine by me. I was more than happy with my find. The quest continues for the matching saucer to complete the original set.

I keep checking the same dealer’s booth each and every show that I go to, and to this day not another bargain like that to be had. Over the years, I have been lucky enough to find several more sets. Take a look at the other little gems I found during my antiquing. Goes to show you can find the darnedest of things when you least expect it. ☆

## RS Prussia Convention Hotel Room Rates

We have reserved 262 room nights at the special RS Prussia price. This number will be held until June 4. If those nights are sold out by that date, any additional nights will be at the regular hotel rate. Any remaining nights of the 262 will be honored until July 4. Perhaps you can see the confusion with the two dates.

However, we were able to negotiate an additional 10 room nights if the 262 are sold by June 4. So in reality, there are 272 room nights reserved until June 4 and 262 room nights if rooms still remain after June 4. Please make your reservations early.

It is imperative you do not use your Marriot Rewards Program for the convention. The club will not get credit for the room nights if you do. We have a minimum number of room nights we must book, or we could end up owing the hotel a large amount of money at the end of the convention. The club appreciates your attention to this matter.

## Seen on Ebay



This swan decor clock was spotted by Beth Vander Meer on Ebay in early January. The winning bid was \$74.27.

# R.S. Prussia Fakes

Mary Lou Bougher

While surfing the internet auctions and sales sites, much too often I find fakes being advertised as antique R.S. Prussia or Suhl. When this happens, I contact the seller and tell them the item that they are selling is a fake and I give them my reasons for believing it. Sometimes I will refer them to the RS Prussia website. Most sellers are honest; not everyone knows RS Prussia. Most are grateful and will either end their listing or revise it letting people know the facts. Once in a while, they ignore me or basically tell me to mind my own business. I always check back and thank the honest ones who end it or alter their listing.

When I find a fake, I copy and save the photo. I have included some of the photos with this article. There is a new line of pure white sets from Japan that have been showing up on EBay. Most of the time, the sellers are identifying them as reproductions, though a true reproduction is made very similar to the real items. It looks like some of these pieces were actually made by using a real R.S. Prussia piece to make a mold—such as the stippled floral mold pot and cups. I've shown a close-up of the pot to show how similar it is to the original. They are



marked only with a paper foil label with a B intertwined with a C in a wreath with the word Japan below. Since it is only a sticker, it could easily be removed. I'm afraid these items will start being advertised as authentic R.S. Prussia blanks or maybe they will be hand painted to look more like the originals. When buying off the internet, you can't hold a piece to get a good inspection. A new collector may easily be fooled, especially the pieces modeled from the stippled floral mold.



For some time, cobalt pieces with an allegorical scene on them have shown up. These pieces can be found in items such as an attractive dresser box, a musical piano-shaped box with a red wreath mark, or a creamer and sugar set.

There are at least four different cracker or biscuit jars found. Three of them are very similar to RS molds while a fourth is very crudely done. Hatpin holders in various shapes and other dresser and desk items can also be found. One of them is fairly new and others have been around awhile. The inkwell or condiment set is recent.

Some of the shoes we have seen often but I recently found a tramp shoe that is very similar to the authentic one. The shoe is made in USA by Heirlooms of Tomorrow. It is really comparable to



Cracker Jars



the original and since you can't hold it, you could be easily fooled.

With the popularity of children's sets, it makes sense that a fake would be made. They are very crudely done and would probably only fool the newest collectors.

The fake rosebud mold chocolate set is often found with different decors. It was apparently made using the real piece to make the mold. However whenever you use a piece to make a mold, much of the finer detail is lost. The rosebuds on the handle look more like lumps than rosebuds.

The two tankard sets with mugs are not even remotely like the real RSP ones. There are also mustache cups, cups and saucers, and chocolate cups.



Miscellaneous newer pieces such as a three-section covered dish came from someone's imagination and a butter dish that reminds you of some of the authentic older RS outline transfer pieces.

A new bowl reminds me of a grapes mold bowl with domes and leaves around the rim where the real one has grape clusters. I haven't seen this in person but it does have multicolor roses and reminds you of real RSP.

The large water pitcher and lemonade pitcher look heavy in the pictures and probably would fool few but the Royal Vienna mold ewer could easily fool someone if it a better decoration on it. The shape and handle are very similar but the decal and trim are crude. One ad I found had a mustache cup in the photo and it showed several other fakes behind it. Obviously they bought them to advertise and sell as authentic RSP.

The iris mold plate looks slightly similar to older Prussia but again looks heavy. The Recamier and Potocka bowls keep showing up along with the same bowl with a portrait of a woman in a hat. I once had someone want to show me their "Prussia" bowl they had found at an estate auction. Luckily they had not paid much for it.

I have also included some of the fake marks that are found on these pieces. The marks found on the fake child's set are closest to real marks.

I hope these photos will stop someone from making an expensive mistake. When you can't actually hold a piece, feel it's weight, and check its transparency, it can be easy to make a



mistake. New fakes are always being made.

That is one of the reasons you should always use a credit card for your Paypal credit method. It will give you an extra layer of protection and recourse when you find out you have bought a fake or a damaged piece that was not advertised as such.

We will add these photos to the website to help others and to serve as a



reference. We do not want any collector, new or seasoned, to get burned and get discouraged from collecting.

Happy hunting, but if your "Prussia radar" or gut feeling doesn't feel just right, check the fakes on the RSP site, ask another collector for advice, or just pass on buying the piece. There will always be another piece out there waiting for you. ☆



## Prussia Points® Convention Seminar continued ...

1920. There was great international competition and contention for being the first to reach the North Pole, and the English, French, Norwegians and Russians all claimed to be the first. Peary made several attempts, but his route via Ellesemere Island, Canada, proved to be successful. He is buried in Arlington Cemetery, Washington, DC, near his comrade and fellow-explorer, Matthew Henson, who was the first African American explorer to traverse the Arctic.

The seminar covered several other portraits and topics, but time and space does not allow for a complete re-iteration. Other intriguing portraits that were discussed included: Frederick the Great; Queen Louise of Prussia; the Artist, Singer and Sculptor series; the ES women with flowers in their hair (discussed in a previous newsletter), and the Goddesses of the Elements

### III. Values and Trends

There remains a great interest in RSP and ES china with portraits among the club members. Generally portrait pieces command higher prices than the floral pieces, but they may get trumped by the animals. They reflect a design approach that was popular over a hundred years ago and was considered to be a decorative art that reflected craftsmanship, artistic talent and ageless appeal.

Thanks to Andrea and Dale Rothrock for their contributions and to members of the audience who added information and contributed their ideas and knowledge to the group. ★

## R.S. Prussia Word Search

Submitted by Harold Dodds, Jr.

R X M P O Y P E P C W H C W X  
D O B O E S C P A P S U H L X  
Z C Y L A B T R L U P M H R G  
I Y F A T I N R J E C M J E Y  
R W G N L A S Y I O D I X G N  
I D S D T V N S B C I N Y I A  
S M L I E A I A U T H G A T M  
H S O R F L L E S R G B L K R  
V N H F X T C S N Y P I A N E  
I N I L S A C C M N L R R D G  
N T O R R A P H G Y A D A Y W  
N I D X Y O C F Z O C P E R A  
B P F G H N U L X J L L S T C  
R G B G A Z E L L E I D S I V  
W W K J G W G V E R K Y B Y D

CARNATION

COBALT

COY

GAZELLE

GERMANY

GOLD

HUMMINGBIRD

IRIS

KANDEL

LILY

MCCASLIN

OSTRICH

PARROT

POLAND

PRUSSIA

RILEY

ROYAL VIENNA

SUHL

TIFFANY

TIGER

## Website Liaison

Attention members! We need your help. Since the new web site went live, Allen Marcus has been our web site liaison. Allen has done a great job, but has asked that we find someone else to fulfill the duties.

The web site liaison duties include posting changes to the site such as convention information, updates, regional club meeting, etc. The liaison will post photos to the gallery and other pages to keep the site up-to-date and interesting. The web site developer's

representative is available to assist with the updates, but it is the club's responsibility to carry out the actual work.

If you are interested in performing these duties for the club or if you know someone in the club who could handle this task, please call or email me.

Allen DiMarco, President

Phone: 570-547-2113 • Email: [ajdgl@aol.com](mailto:ajdgl@aol.com)